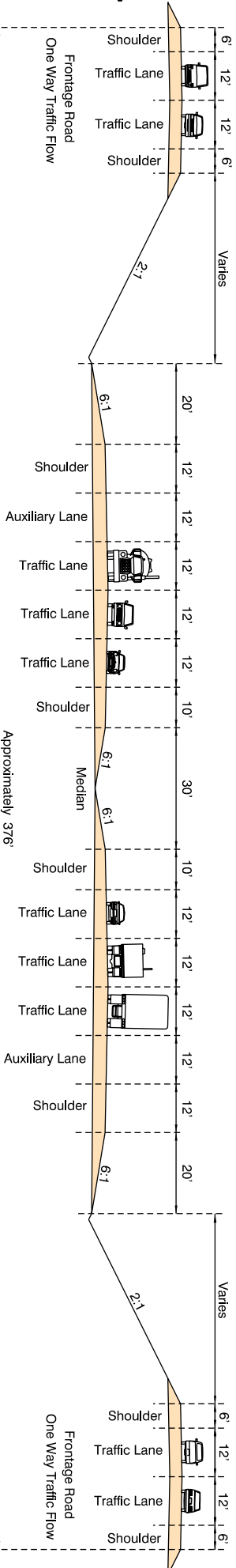
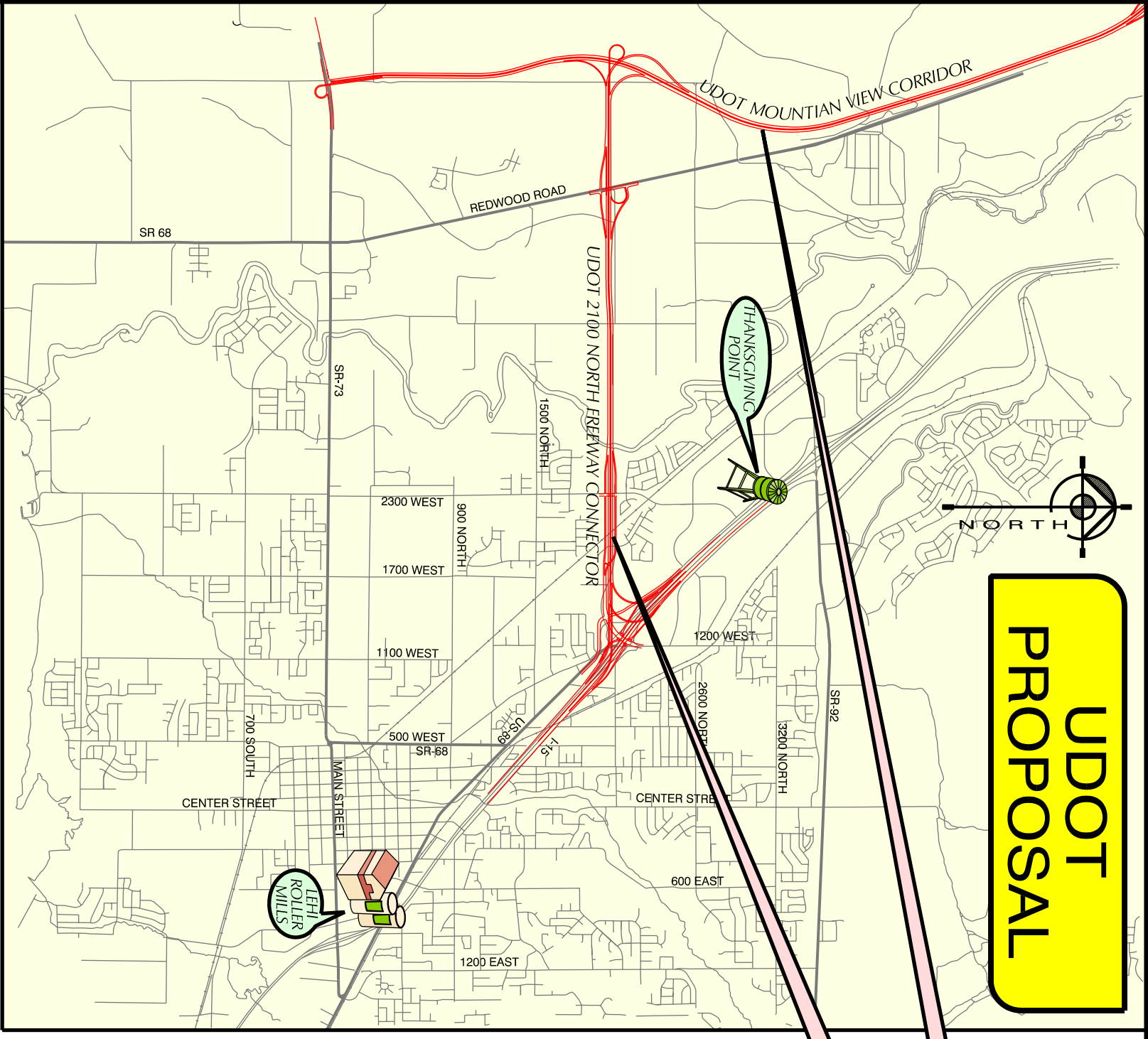
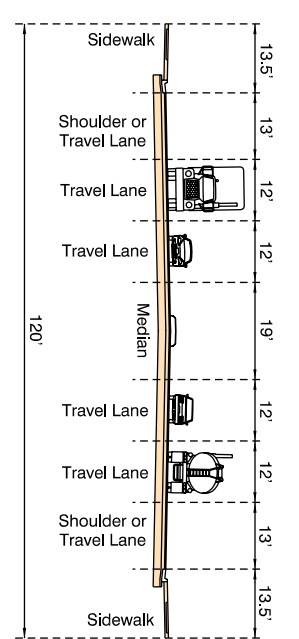


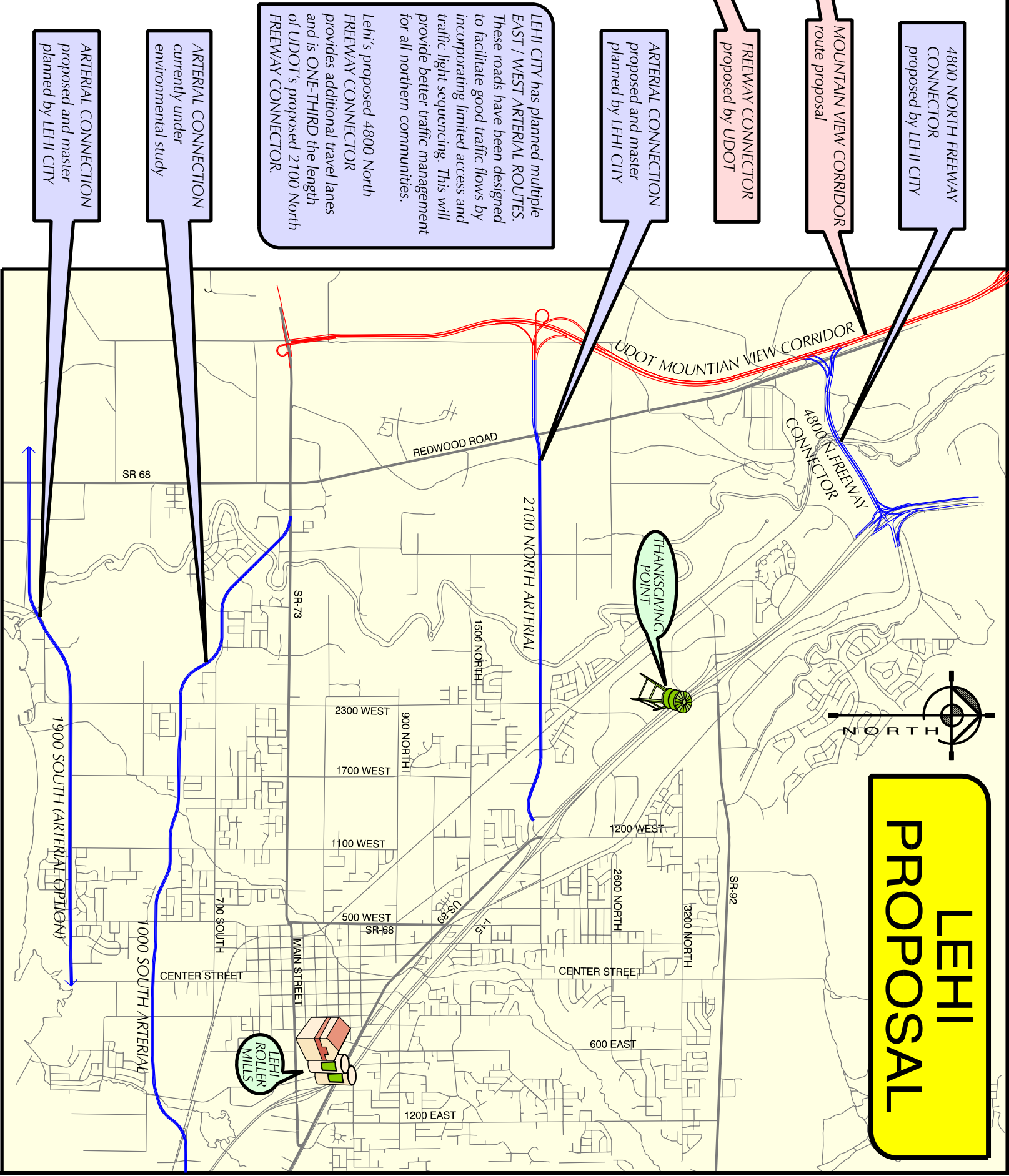
**UDOT 2100 NORTH
FREEWAY
CROSS SECTION**



**LEHI 2100 NORTH
ARTERIAL
CROSS SECTION**



**UDOT
PROPOSAL**



**LEHI
PROPOSAL**

4800 NORTH FREEWAY CONNECTOR proposed by LEHI CITY

MOUNTAIN VIEW CORRIDOR route proposal

FREEWAY CONNECTOR proposed by UDOT

ARTERIAL CONNECTION proposed and master planned by LEHI CITY

LEHI CITY has planned multiple EAST / WEST ARTERIAL ROUTES. These roads have been designed to facilitate good traffic flows by incorporating limited access and traffic light sequencing. This will provide better traffic management for all northern communities.

Lehi's proposed 4800 North Freeway Connector provides additional travel lanes and is ONE-THIRD the length of UDOT's proposed 2100 North Freeway Connector.

ARTERIAL CONNECTION currently under environmental study

ARTERIAL CONNECTION proposed and master planned by LEHI CITY